



Anapurna M2500

The Anapurna M2500 is a top quality
2,5 m wide format UV inkjet printer
for indoor and outdoor applications.

AGFA 

STAY AHEAD. WITH AGFA GRAPHICS.

Anapurna M2500



In-store communication - Dibond

Anapurna M2500 is a wide format high-speed UV curable inkjet system for graphic screen printers, photo shops and sign shops. It is a heavy-duty, turnkey and complete industrial UV inkjet system. It is designed to produce outdoor and indoor top quality wide format jobs in any 'print for pay' industry environment, on a wide range of rigid and roll-to-roll media. The white ink function creates new possibilities for printing on transparent material for backlit applications or printing white as a spot colour.

2,5 m wide for more productivity and a wider range of applications. 2,5 m is a popular print width expanding your range of flexible media applications. Or you could increase your productivity simply by printing more boards at a time. The Anapurna M2500 adds more versatility to your business.

Speed is key.

Measured at optimum print shuttle speed, the system produces output in the six colours at top throughput at 60 m²/h. There is no mounting, no waiting, and no remakes. At that speed you will be able to maintain a high print production on all your substrates, satisfying your most demanding customers.

White is beautiful.

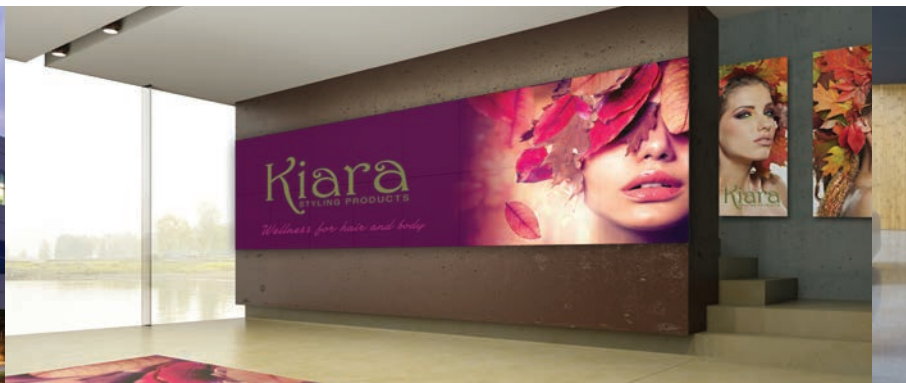
The Anapurna M2500 has white ink on-board, ideal to print on coloured or dark substrates. It also creates possibilities for printing on transparent material for backlit or backlit/frontlit applications or simply as a white spot colour. You might even consider printing images on dark substrates using white ink only. Stand out and let Anapurna M2500 differentiate your decoration and communication jobs.

Anapurna M2500 white ink system is reliable.

Anapurna M2500 has a fully separated white ink management system. (separate circulation system, under-pressure-regulation and cleaning circuit) The white ink tank is equipped with a stirring mechanism to keep the ink properly mixed at all times. And... pre- or post-white can be done in one production run.



Outdoor communication - Banner



In-store communication - Bache

Print quality. And it shows!

The eight 12 picolitre heads guarantee printing of good solids, fine text reproduction of up to 6 pt, good tonal rendering and low ink consumption. Next to the 8 (CMYK Lc Lm, 2 x white) print heads this system features a robust and industrial engineered concept, fit for sustained higher work loads. The 1024 nozzles produce top quality prints at 720 x 1440 dpi on uncoated flexible or rigid media, up to 4,5 cm thick.

Hi-tech vacuum system with 4 zones

Anapurna M2500's automatic vacuum system delivers an equal vacuum throughout the whole printing process, whether printing roll or rigid materials. This ensures flawless media transport, giving accurate print results at all times! The ring-blower driving the vacuum system is built-in in the printer, reducing the noise to a minimum for even more user convenience.

Shuttle safety sensors

Anapurna M2500 incorporates a set of shuttle safety sensors to prevent printheads from touching the substrate. This will avoid any possible damage to the precious print-heads.

Flawless media handling and perfect droplet control

Media loading is very straightforward with automated features such as the media registration bar and head height adjustment. An ionizer bar sees to it that there are no electro-static loads on the substrate, ensuring optimum ink droplet control and therefore delivering the highest print quality.

Multiple board or borderless

Multiple board printing is possible to maximise your productivity even more. The borderless printing feature makes post-finishing superfluous. Since UV-pints are immediately dry you can use a borderless print immediately as the final product.

Ink to print.

The "Agfa Graphics-made" Anapurna UV-curable inks provide a large colour gamut, high colour vibrancy and, thanks to good ink adhesion, high image longevity and outdoor resistance.

Maintenance of the Anapurna M2500 is easy and during production the ink levels are monitored by the automatic ink refill system. Anapurna inks allow instant curing, making prints ready to handle immediately after leaving the engine.

Possibilities galore!

Switching between rigid and roll media is instant. Therefore Anapurna M2500 delivers exceptional print quality on a wide variety of indoor and outdoor media on uncoated rigid media, such as plexi glass, glass, mirrors, corrugated boards, rigid plastics, exhibition panels, stage graphics and advertising panels up to 4,5 cm thick, as well as roll media such as film, vinyl and paper, canvas and banners up to 4,5 cm thick.



In-house decoration - Plexi glass - dibond





•Anapurna M2500

ENGINE FEATURES

- Reinforced beam
- Automated Media Positioning bar for registration of rigids
- Divided vacuum table, 4 zones
- 1,5 kW ring blower for strong vacuum situated in the engine for less noise
- Accurate Media transport/feed
- Powerfull fastcan motor
- Automatic control of vacuum strength
- Ionisation bar removes electrostatic loads on media
- Shuttle safety sensors on each side of the carriage
- Extended basic frame, to support ring blower
- Black coloured media transport belt
- Network and USB (2) connection
- On-board controller with touchscreen

APPLICATIONS

- Banners, Posters, Exhibition graphics, POP, Mock-ups, Backlit, Frontlit, Self adhesives (Labels)
- Niche application: DVD printing, wood, ... Art reproductions, personalised object printing (mouse mats), ...
- Party gadgets (beer coasters, ...)
- Architectural and Interior decoration

SUBSTRATE FLEXIBILITY

- Up to 250 cm media width
- Up to 249 cm print width
- Borderless printing
Up to 250 cm media width
- Dual board printing
Min. size: A2, landscape
- Media thickness up to 45 mm
- Media weight up to 10 kg/m²
- 4 rigid tables (2 rear & 2 front)
Extends max length 3.2 m
- Roll-to-Roll
Max. roll weight: 50 kg
Max. roll diameter: 36 cm

COLOR GAMUT

- Capable of reproducing ISO 12647 in Poster (4pass Double Strike) and Photo (8 pass)

TEXT QUALITY

- Positive: 4 point
- Negative: 6 point

IMAGE QUALITY - PRODUCTIVITY

- Express mode @ 60 m²/h
- Production @ 30 m²/h
- Standard @ 18 m²/h
- High Quality @ 9 m²/h
- High difinition @ 8 m²/h

INKS

7 :Anapurna M G2 UV curable inks (CMYKcLm and White)

HEADS

- 6 Konica-Minolta: 1024 nozzles/head with a droplet volume of 12pl (colours)
- 2 Konica-Minolta: 42pl (white in line)

DIMENSIONS

4750 (W) x 1620 (H) x 1780 (D) mm

WEIGHT

2180 KG

ELECTRICITY

- 380V - 415 V 3-phase star connection with Neutral wire (3x 30A* 50Hz)
- 208V - 240V 3-phase delta connection without Neutral wire (3x 30A* 60Hz)

SYSTEM INTEGRATION RIP

- Integrated production solution with Asanti, Wasatch or ErgoSoft RIP Agfa Edition available
- Ready to use :Anapurna M2500 media/ink profiles available